

MDF-25V100

-25°C MEDICAL DEEP FREEZER



MDF-25V100 (100L Medical Deep Freezer) is widely used in hospitals and laboratories. This is for placing and preserving storage such as drugs, vaccines, blood, enzymes, hormones, stem cells, extracted RNA and gene libraries and important biological and chemical reagents.

FEATURERS



Fast pull down

Better cooling performance



Coil evaporator

Better temperature uniformity



5 types of alarm

Audible and visual alarms



Lockable doors

Standard locks with keys



High-quality steel materials

Antibacterial and corrosion resistant



Precise temp. control

Temp. control accurate to 0.1°C



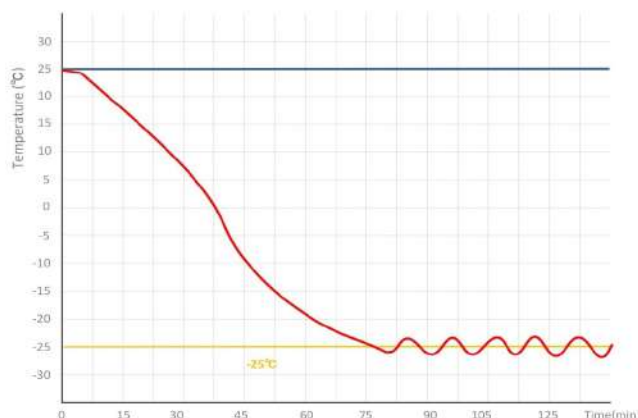
Variable space

Multi-drawer design



Eco-friendly

CFC-free refrigerant and energy-saving



MDF-25V100 Pull Down Test at Ambient

STRUCTURE



Solid door design

High/low temp. alarm

Power failure alarm

Door ajar alarm

Thermostat failure alarm

Coil evaporator cooling system makes the chamber temperature more uniform. The 4 independent inner doors give the cabinet better insulation performance and are more convenient to use.

PARAMETER

Performance		Refrigeration System		Alarms	
Cooling method	Direct Cooling	Refrigerant	R600a	High/low temperature	Y
Defrost	Manual	Temp. controller	Microprocessor	Power failure	Y
Shelf/drawer	Shelves&drawer/5	Sensor	NTC	Sensor error	Y
Temperature range	-10℃~-25℃	Display	Digital display	Controller failure	Y
Ambient temperature	10~32℃	External material	SPCC sprayed steel	Door ajar	Y
Noise (db)	50	Compressor QTY	1	Power failure backup	8 hours

Electrical Data		Dimensions		Other	
Voltage frequency(V/Hz)	220V 50Hz/60Hz	Package size(W*D*H)(mm)	590*590*900	Inner door	None
Power (W)	150W	Capacity (L/cu.ft)	100/3.53	Remote alarm port	Optional
Current (A)	0.9A	Exterior size(W*D*H)(mm)	540*540*880	Access port QTY/Dia.	1/25mm
Power consumption	2.2kWh/24h	Interior size(W*D*H)(mm)	410*410*670	Internal material	SPCC sprayed steel