

# -10°C~-25°C Biomedical Freezer

Stable Performance • High Quality



## DW - YL270

### Refrigeration System

- The environmentally friendly Freon-free refrigerant and high-efficiency enclosed compressor supplied by a famous brand can ensure energy saving and low noise.
- The condenser installed on the bottom ensures temperature stability and system reliability.

### Temperature Control

The high-precision computerized temperature control system ensures an adjustable temperature within a range from -10 to -25°C inside the cabinet.

### Security System

The well-developed audible & visual alarm system (sensor failure alarm, high temperature/low temperature alarm, etc.) makes it safer for storage;  
The turn-on delay and stopping interval protection function can ensure reliability in running;

### Human-oriented

The built-in door gasket is dustproof and easy to clean





### High-precision Temperature Control System

- The system has the function of digital temperature display and temperature inside the cabinet can be set within a range from -10°C to -25°C;
- High-precision microcomputer temperature control system; The platinum resistor temperature sensors ensure more precise temperature control.



### Refrigeration System

- The compressor supplied by an international famous brand and EBM fan are energy saving and environmentally friendly;
- The refrigerating circuit with proprietary intellectual property rights ensures high efficiency and stability.



### Structure Design

- Upright type, aluminum plate with spraying material interior, Outer body is painted steel board.
- Inside drawers made of ABS, 7 drawers.



### Thermal Insulation System

- The two-layer thermal insulating foamed door can prevent loss of refrigerating capacity in an effective way;
- The cabinet is made from CFC-free polyurethane material, which can improve its heat insulating performance to a large extent.



### Security System

- The well-developed audible & visual alarm system makes it safer for storage;
- Equipped with alarm functions including high/low temperature alarm, sensor error.;
- Specially equipped with external door handle and padlock to prevent unauthorized opening.



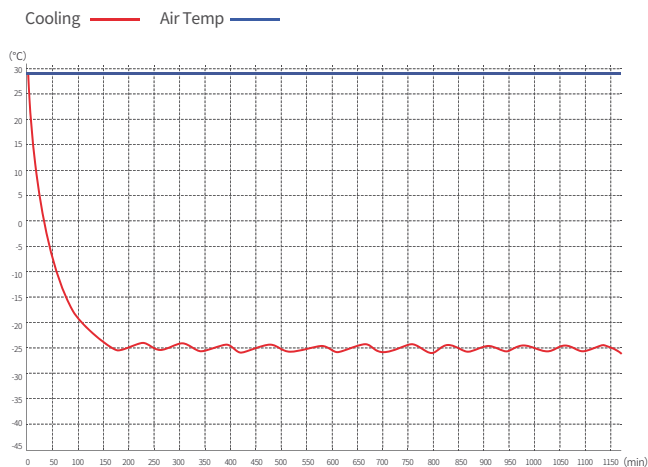
### Human-oriented

The safety lock on the door, with door handle, 4 units Caster provided for easy handling.

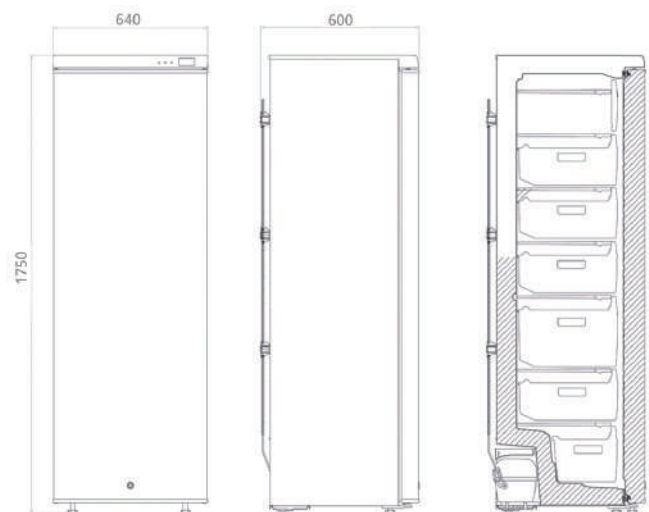
## ✓ Scope of Application

Suitable for use in scientific research, cryogenic test on special materials, blood plasma cryopreservation, low temperature resistance test on biological materials, vaccines, biological products and military products, etc. Suitable for use in research institutions, the electronic industry, the chemical industry, hospitals, the health & disease prevention system, laboratories in colleges & universities, military enterprises, etc.

## 🔗 Performance Data / Cooling Curve



## 📏 External Dimensions



## Specification Chart

-25°C Biomedical Freezer	
Model	DW-YL270
Cabinet Type	Upright
Capacity(L)	270
Internal Size(W*D*H)mm	500*460*1235
External Size(W*D*H)mm	700*640*1792
Package Size(W*D*H)mm	760*700*1885
NW/GW(Kgs)	90/98
Performance	
Temperature Range	-10~-25°C
Ambient Temperature	16-32°C
Cooling Performance	-25°C
Climate Class	N
Controller	Microprocessor
Display	Direct display
Refrigeration	
Compressor	1
Cooling Method	Direct Cooling
Defrost Mode	Manual
Refrigerant	R600a
Insulation Thickness(mm)	100
Construction	
External Material	Powder coated material
Inner Material	Aluminum plate with spraying
Shelves	7(ABS)
Door Lock with Key	Y
Access Port	1
Casters	4
Alarm	
Temperature	High/low temperature
System	Sensor error
Construction	Door ajar
Electrical	
Power Supply(V/Hz)	220/50, 220/60, 110/60
Rated Power(W)	135
Input Power(W)	335
Power Consumption(KWh/24h)	1.21
Rated Current(A)	1.53

\*The model, parameters and performance specified in this brochure may be changed without prior notice because of product upgrading.

\*There may be differences between the product images shown in this brochure and the actual products. When you are buying any product, please check the actual product.