

# -10°C~-25°C Biomedical Freezer

*New Upgrade*

*Stable Performance • High Quality*



## DW - YL90



### Brand New Appearance, the Second Generation of High-quality Product

The polyurethane foam door has great thermal insulation performance.

### Multiple alarms ensure safety of storage

The freezer has multiple audible & visual alarm functions, such as high temperature/low temperature alarm, door ajar alarm, sensor failure alarm, etc. and can guarantee security of samples in a comprehensive way.

### Temperature Control

The high-precision computerized temperature control system ensures an adjustable temperature within a range from -10 to -25°C inside the cabinet.





### Control Panel

The high-definition digital temperature display can realize a temperature display precision of 0.1°C and is convenient for observation;



### Safety Lock

Equipped with safety lock to prevent the product from being opened maliciously.



### Refrigeration System

The compressor supplied by a famous brand and high-efficiency refrigerant R290 can reduce energy consumption to a large extent;



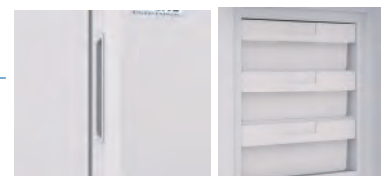
### Alarm Upgrading

The high temperature/low temperature alarm, door ajar alarm, sensor failure alarm and can ensure security of samples comprehensively;



### Data Storage

Equipped with USB data export interface, can export 100,000 pieces of data



### Human-oriented

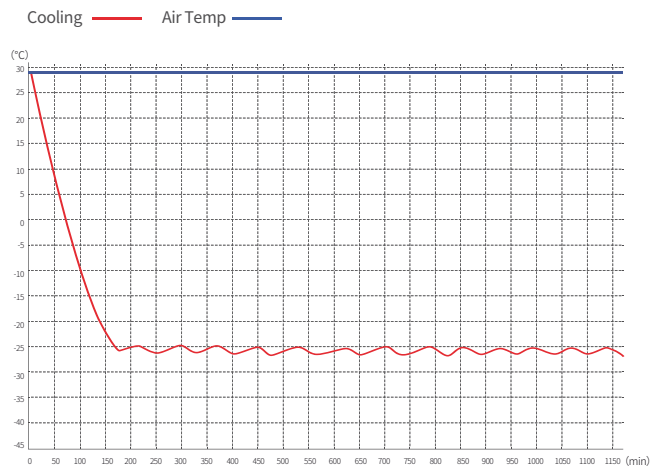
The invisible door handle can prevent damage during transportation and save space; The 3 drawers are convenient for separate storage of different types of things and can prevent cross influence among various things.



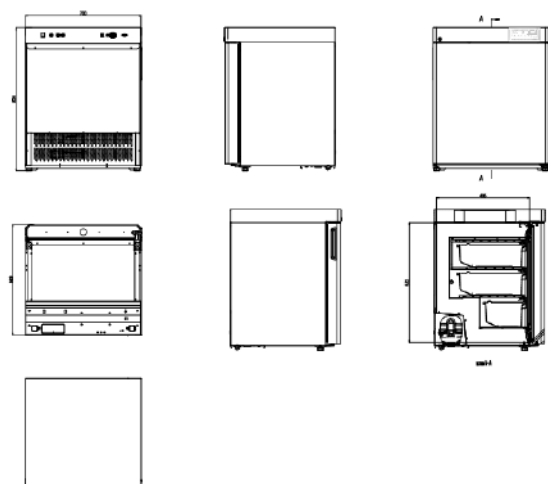
## Scope of Application

Suitable for freezing of ice bars and storage of various things needing refrigerated storage such as blood plasma, reagent, etc. Suitable for use in hospitals, clinics, health and disease prevention systems, blood banks, laboratories in colleges & universities, the frozen food industry and catering industry, etc.

## Performance Data / Cooling Curve



## External Dimensions



## Specification Chart

<b>-25°C Biomedical Freezer</b>	
Model	DW-YL90
Cabinet Type	Upright
Capacity(L)	90
Internal Size(W*D*H)mm	500*485*532
External Size(W*D*H)mm	700*678*864
Package Size(W*D*H)mm	765*735*935
NW/GW(Kgs)	54/67
<b>Performance</b>	
Temperature Range	-10~-25°C
Ambient Temperature	16-32°C
Cooling Performance	-25°C
Climate Class	N
Controller	Microprocessor
Display	Digital display
<b>Refrigeration</b>	
Compressor	1pc
Cooling Method	Direct Cooling
Defrost Mode	Manual
Insulation Thickness(mm)	100
<b>Construction</b>	
External Material	PCM
Inner Material	Aluminum plate with spraying
Shelves	3(ABS)
Door Lock with Key	Yes
Padlock	Optional
Access Port	1pc. Ø 25 mm
Casters	2+(2 leveling feet)
Data Logging/Interval/Recording Time	USB/Record every 10 minutes / 2 years
Backup Battery	Yes
<b>Alarm</b>	
Temperature	High/Low temperature,High ambient temperature
System	Power failure
Construction	Sensor failure,Door ajar , Built-in USB datalogger failure, Communication failure
<b>Electrical</b>	
Power Supply(V/HZ)	220-240/60
Rated Current(A)	1.66
<b>Accessories</b>	
Standard	RS485,Remote alarm contact

\*The model, parameters and performance specified in this brochure may be changed without prior notice because of product upgrading.

\*There may be differences between the product images shown in this brochure and the actual products. When you are buying any product, please check the actual product.